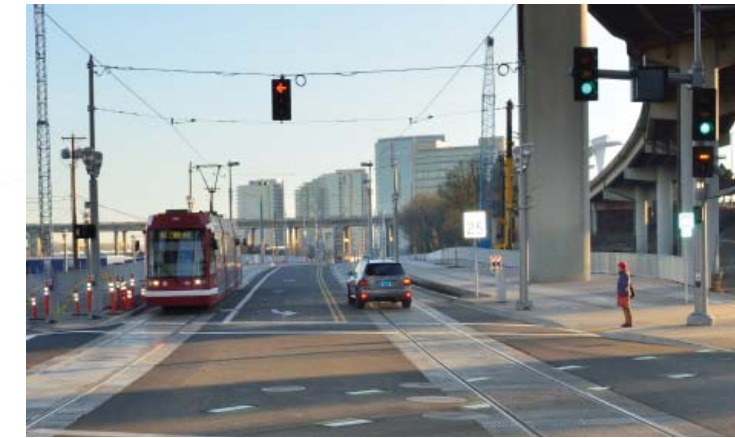
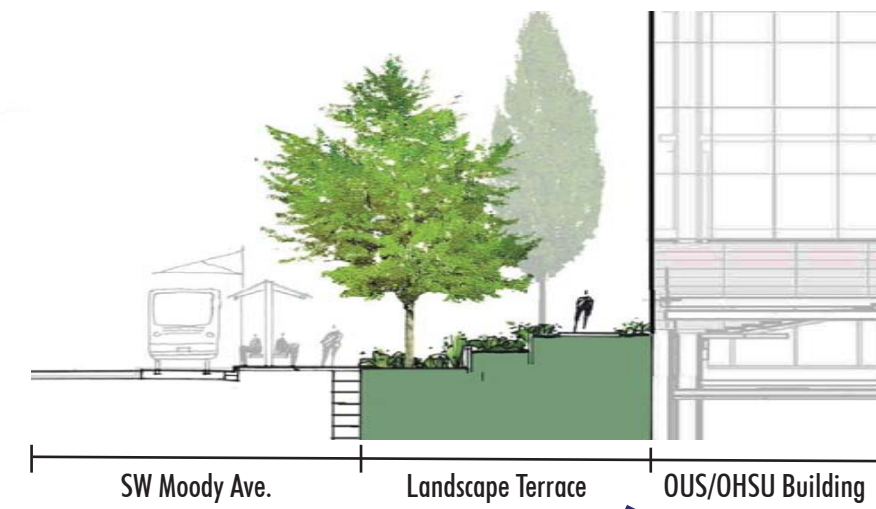


# SW Moody Avenue Reconstruction



SW Sheridan / Moody Intersection



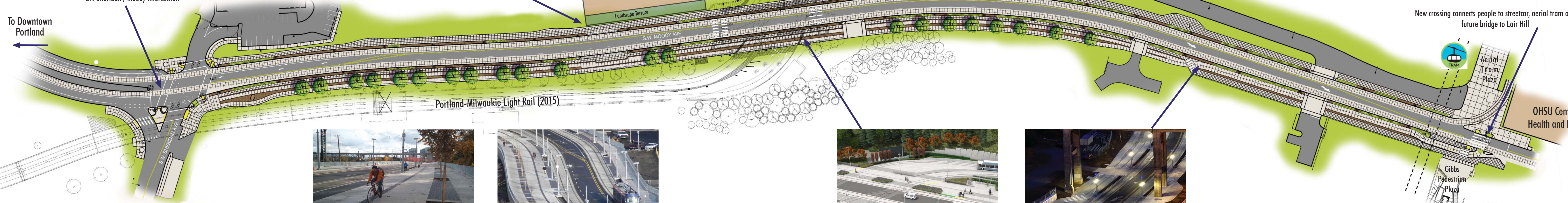
SW Moody Ave. Landscape Terrace OUS/OHSU Building

Future TriMet Bridge across Willamette River (2015)

Future OUS/OHSU Building (2013)



Future South Waterfront Light Rail Station



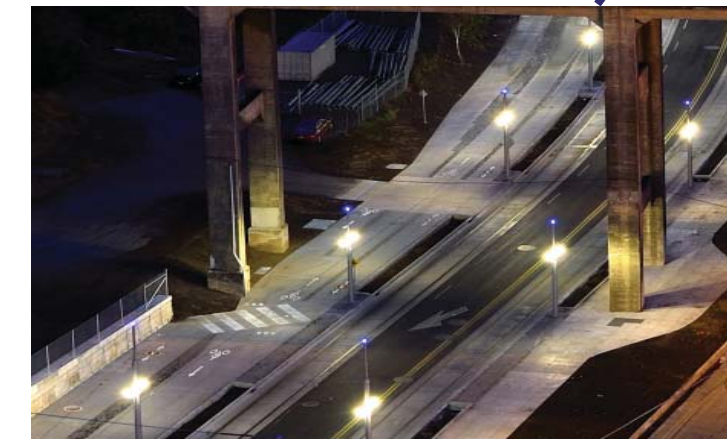
SW Moody Avenue with three travel lanes , dual streetcar tracks, sidewalks and two-way cycle track separated by street trees



Portland-Milwaukie Light Rail (2015)



Future Porter / Moody Intersection



Cycle track transition at Ross Island Bridge

## Project Plans and Context



New crossing connects people to streetcar, aerial tram and future bridge to Lair Hill



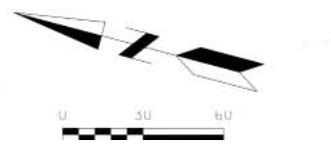
Aerial Tram Plaza

OHSU Center for Health and Healing



Gibbs Pedestrian Plaza

Gibbs St. Pedestrian Bridge across I-5 Freeway (2012)



## SW Moody Avenue Reconstruction

To rest of South Waterfront